



English



uestros
useos

Subdirección General
de Museos Estatales





Nuestros MUSEOS

Subdirección General
de Museos Estatales

Catalogue of Publications of the Ministry: www.mecd.gob.es
General Catalogue of Publications: publicacionesoficiales.boe.es

Edition 2015



MINISTRY OF EDUCATION, CULTURE
AND SPORTS

Published by:

© TECHNICAL GENERAL SECRETARIAT
Sub-Directorate General
of Documentation and Publications

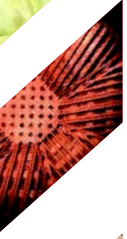
© Translation:
Cillero & De Motta

© Texts and pictures: each Museum

NIPO: 030-15-259-X
DOI: 10.4438/030-15-259-X

The Ministry of Education, Culture and Sports has published this guide which aims to be a simple and useful tool for providing relevant information on the featured museums and facilitating your visit. The intention is to promote understanding and enjoyment of museums as a form of cultural entertainment open to all members of the public.

We invite you to visit them.



Nuestros Museos

Subdirección General de Museos Estatales

	CARTAGENA (MURCIA)	
	Museo Nacional de Arqueología Subacuática. ARQUA	8
	MADRID	
	Museo Arqueológico Nacional	10
	Museo Cerralbo	12
	Museo de América	14
	Museo del Traje. CIPE	16
	Museo Nacional de Antropología	18
	Museo Nacional de Artes Decorativas	20
	Museo Nacional del Romanticismo	22
	Museo Sorolla	24
	MÉRIDA (BADAJOZ)	
	Museo Nacional de Arte Romano	26
	SANTILLANA DEL MAR (CANTABRIA)	
	Museo Nacional y Centro de Investigación de Altamira	28
	TOLEDO	
	Museo del Greco	30
	Museo Sefardí	32
	VALENCIA	
	Museo Nacional de Cerámica y de las Artes Suntuarias “González Martí”	34
	VALLADOLID	
	Museo Casa de Cervantes	36
	Museo Nacional de Escultura	38

Museo Nacional de Arqueología Subacuática. ARQUA

Dive into the sea of history

The Museo Nacional de Arqueología Subacuática gives visitors the opportunity to discover the history of our cultural heritage hidden under water. Founded in 1981, its new building was inaugurated in 2008 in which, in addition to show the public its collection, the Museum is responsible for the protection and research of Spanish Underwater Heritage.

It is an absolute must for anyone interested in discovering Spain's underwater heritage in three broad areas. Firstly, *Patrimonio Cultural Subacuático*, which explains the methodology used in underwater excavations and where one of the highlights is a replica of a boat from the Phoenician period (7th century BC) found in Mazarrón. Secondly, *Mare Hibericum*, invite visitors to learn about the Iberian Peninsula through the Mediterranean's history and trade from Antiquity to the 19th century. Highlights include the original Mazarrón I shipwreck and its cargo from the Phoenician period, the collection of elephant tusks, also from the Phoenician period, found at the site of the Bajo de la Campana shipwreck and a Roman shipwreck found of Escombreras Island. The third area, *La Navegación Oceánica* shows the cargo of the frigate Nuestra Señora de las Mercedes, recently recovered by the Spanish state, which contained almost 600 000 Pieces of Eight silver coins.

museoarqua.mcu.es

Facebook



OPENING TIMES

- 15 APRIL TO 15 OCTOBER:
Tuesday to Saturday from 10:00 a.m. to 9:00 p.m. Sundays and public holidays from 10:00 a.m. to 3:00 p.m.
- 16 OCTOBER TO 14 APRIL:
Tuesday to Saturday from 10:00 a.m. to 8:00 p.m. Sundays and public holidays from 10:00 a.m. to 3:00 p.m.
- CLOSED: Every Monday · 1 and 6 January · 1 May · 24, 25 and 31 December · One local holiday.

ADMISSION

- GENERAL: 3 €.
- REDUCED: 1,5 €.
- FREE: Saturdays from 2:00 p.m., Sundays and holidays: 18 May · 12 October · 16 November · 6 December.
Reduced and free admission: Ask for further information at the Ticket Office.

ADDRESS

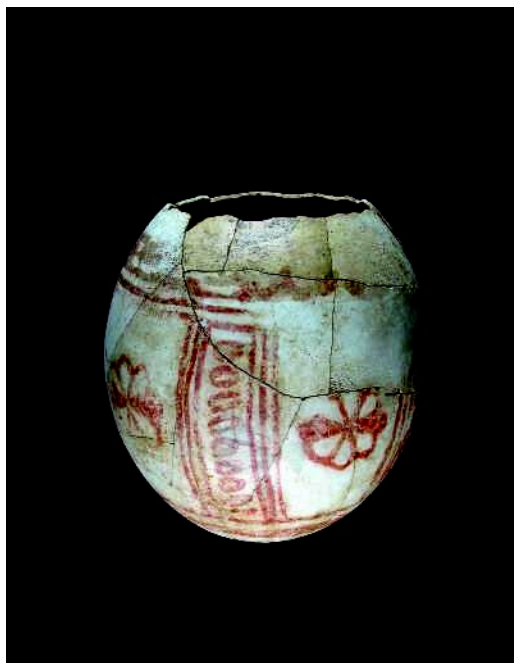
- Paseo del Muelle Alfonso XII, 22
30202 Cartagena (Murcia)

GETTING HERE

- BUS: Line 8: Icuebus and 9: Icuebus -2.
Tourist bus: Alfonso XII stop.
- BY SEA: Tourist boat. Leaves from Muelle de Alfonso XII quay.
- PARKING: Puerto and Plaza del Rey car parks.

CONTACT

- +34 968 121 166
- informacion.arqua@mecc.es



Museo Arqueológico Nacional

A walk through history

The Museo Arqueológico Nacional is the ideal place to learn about and enjoy Spain's outstanding archaeological collections. Located in the capital of Spain, the Museum houses a broad and representative sample of archaeological and artistic materials that reflect the diversity of the peoples and cultures that shaped the history of Spain from prehistoric times to the 19th century. Also on exhibition are important artefacts from two great Mediterranean civilisations, Ancient Egypt and Ancient Greece. Finally, a thematic exhibition on currency and coins gives visitors the opportunity to see part of the Museum's outstanding numismatic collection. After the recent renovation of the building, the Museum has updated its permanent exhibition in order to create a space that aids awareness and understanding of the historical past.

man.es

Facebook · Twitter

M A N MUSEO
ARQUEOLÓGICO
NACIONAL

OPENING TIMES

- Tuesday to Saturday from 9:30 a.m. to 8:00 p.m.
- Sundays and public holidays from 9:30 a.m. to 3:00 p.m.
- CLOSED: Every Monday · 1 and 6 January · 1 May · 24, 25 and 31 December · One local holiday.

ADMISSION

- GENERAL: 3 €.
- REDUCED: 1,5 €.
- FREE: Saturdays from 2:00 p.m., Sundays and holidays: 18 May · 12 October · 16 November · 6 December.
Reduced and free admission: Ask for further information at the Ticket Office.

ADDRESS

- C/ Serrano, 13
28001 Madrid

GETTING HERE

- BUS: Lines 1, 9, 19, 51 and 74 stop in front of the Museum; 5, 14, 27, 45 and 150 stop in Paseo Recoletos; 21 and 53 stop in Plaza de Colón; 2, 15, 20, 28, 52 and 146 stop at Plaza de la Independencia.
- METRO: Serrano (L4) and Retiro (L2).
- CERCANÍAS RENFE (LOCAL TRAINS): Recoletos station (Lines C1, C2, C7, C8 and C10).
- BICYCLE: BiciMad docking station 107 in C/ Serrano. Bicycle lane in C/ Serrano.
- PARKING: Plaza de Colón public car park (Jardines del Descubrimiento) and Serranopark III (C/ Jorge Juan and Plaza de la Independencia).

CONTACT

- +34 915 777 912
- sugerencias.man@mecc.es



Museo Cerralbo

The charm of a palace

A historic house and museum, the palace housing the Museo Cerralbo is unique in that the original decor of the period, when it was the residence of the Marquis of Cerralbo and his family, has been preserved.

Museo Cerralbo is a landmark in the art of collecting in Spain and retains the essence of the period when Don Enrique de Aguilera y Gamboa, the 17th Marquis of Cerralbo (1845-1922), built the palace to live in, house his collections and engage in an active social and political life.

Its exhibition halls, furnished according to the tastes of the late 19th century, and the works of art it houses are a testament to the life of the Madrid aristocracy at the time, as well as Don Enrique de Aguilera's fondness for compiling what was one of the finest private art collections of the time, which he bequeathed to the Spanish state in 1922.

museocerralbo.mcu.es

Facebook · Twitter · Instagram · Pinterest · beQbe ·
Youtube · Google +



MUSEOCERRALBO

OPENING TIMES

- Tuesday to Saturday from 9:30 a.m. to 3:00 p.m.
- Thursday from 5:00 p.m. to 8:00 p.m. (except public holidays).
- Sundays and public holidays from 10:00 a.m. to 3:00 p.m.
- CLOSED: Every Monday · 1 and 6 January · 1 May · 24, 25 and 31 December · One local holiday.

ADMISSION

- GENERAL: 3 €.
- REDUCED: 1,5 €.
- FREE: Saturdays from 2:00 p.m., Sundays and holidays: 18 May · 12 October · 16 November · 6 December.
Reduced and free admission: Ask for further information at the Ticket Office.

ADDRESS

- C/ Ventura Rodríguez, 17
28008 Madrid

GETTING HERE

- BUS: Lines 1, 2, 3, 44, 46, 74, 75, 133, 147, 148 and the "Circular".
- METRO: Ventura Rodríguez (L3), Plaza de España (L3 and L10), Noviciado (L2) and Príncipe Pío (L6 and L10).
- CERCANIAS RENFE (LOCAL TRAINS): Príncipe Pío (C1, C7 and C10).
- BICYCLE: BiciMad docking station 14 in C/ Ventura Rodríguez, station 115 in Templo de Debod and station 116 BiciMad in Plaza de España. Public cycles parking facing the Museum's entrance.
- PARKING: Plaza de España.

CONTACT

- +34 915 473 646 / 47
- museo.cerralbo@mecd.es



Museo de América

All roads lead to America

Museo de América's permanent exhibition halls give visitors the opportunity to trace the footsteps of American cultures and discover their unique responses to the universal challenges of humanity.

Through a magnificent collection of artefacts from the Pre-Columbian era (such as those from Peru and Guatemala), the colonial period (Andean schools and those of the Viceroyalty of New Spain), and contemporary indigenous peoples (from the northwest coast of North America to the Amazon), and an anthropological discourse that advocates respect for all cultures, Museo de América gives visitors the opportunity to contemplate numerous objects, texts and images that have disseminated the realities and inventions of America for centuries. Discover how the continent's peoples and cultures evolved over more than 12,000 years of history, and how their models of society were articulated. Learn about their contribution to the world of religion, and the instruments they used to communicate with one another.

mecd.gob.es/museodeamerica

Facebook · Twitter · Youtube

MUSEO DE  AMÉRICA

OPENING TIMES

- Tuesday to Saturday from 9:30 a.m. to 3:00 p.m.
- Open all day Thursday from 9:30 a.m. to 7:00 p.m. (except public holidays).
- Sundays and public holidays from 10:00 a.m. to 3:00 p.m.
- CLOSED: Every Monday · 1 and 6 January · 1 May · 24, 25 and 31 December · One local holiday.

ADMISSION

- GENERAL: 3 €.
- REDUCED: 1,5 €.
- FREE: Sundays and holidays: 18 May · 12 October · 16 November · 6 December. Reduced and free admission: Ask for further information at the Ticket Office.

ADDRESS

- Avenida de los Reyes Católicos, 6
28040 Madrid.

GETTING HERE

- BUS: Lines 1, 2, 16, 44, 46, 61, 82, 113, 132, 133 and the "Circular".
- METRO: Moncloa (L3 and L6) and Islas Filipinas (L7).
- BICYCLE: BiciMad station 110 on Paseo Moret.
- PARKING: Free parking at weekends and public holidays.

CONTACT

- +34 915 492 641
- museo.america@mecd.es



Museo del Traje. CIPE

Historical and contemporary Spanish and international fashion

The Museo del Traje's permanent exhibition of clothing traces the development of fashion from the 18th century to the present day.

A careful selection of garments and accessories recounts the connection between social practices, aesthetics and identity throughout the centuries. The Museum also has areas devoted to solo artists, such as Mariano Fortuny, whose historical costumes stand out for the beauty of the fabrics, and the great Cristóbal Balenciaga in the field of *haute couture*. The Learning and Multisensory Area, adapted for visitors with visual impairments, explores aspects such as the evolution of the figure and the historical transformation of garments. Through a varied programme of temporary exhibitions and activities, the Museum showcases its extensive collection and, aside from visits, offers a complete experience built around the world of clothing.

museodeltraje.mcu.es

Facebook · Twitter · Instagram



MUSEO
DEL **TRAJE**
Centro de
Investigación
del Patrimonio
Etnológico

OPENING TIMES

- Tuesday to Saturday from 9:30 a.m. to 7:00 p.m.
- Sundays and public holidays from 10:00 a.m. to 3:00 p.m.
- CLOSED: Every Monday · 1 and 6 January · 1 May · 24, 25 and 31 December · One local holiday.

ADMISSION

- GENERAL: 3 €.
- REDUCED: 1,5 €.
- FREE: Saturdays from 2:30 p.m., Sundays and holidays: 18 May · 12 October · 16 November · 6 December.
Reduced and free admission: Ask for further information at the Ticket Office.

ADDRESS

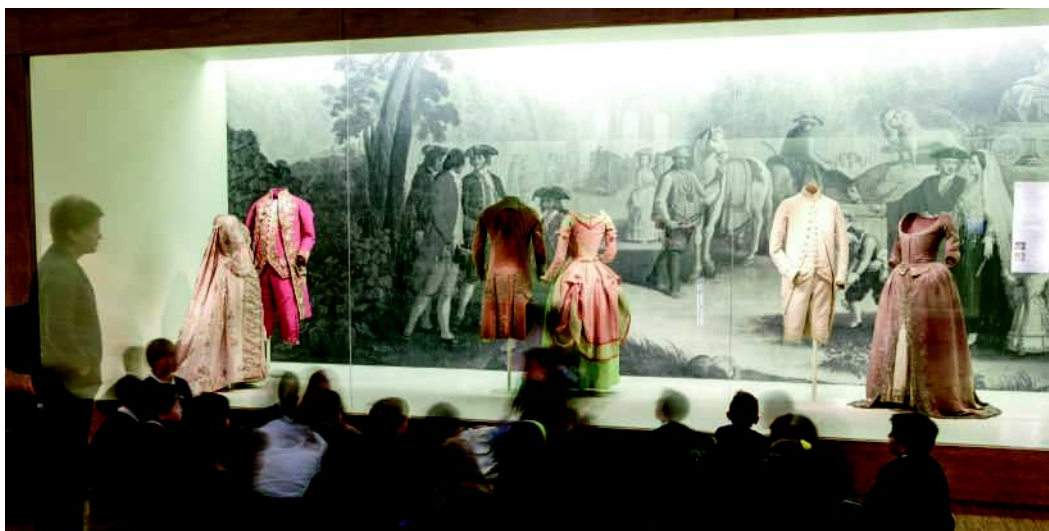
- Avenida Juan de Herrera, 2
28040 Madrid

GETTING HERE

- BUS: Lines 46, 82, 83, 132, 133 and G.
- METRO: Moncloa (L3 and L6) and Ciudad Universitaria (L6).

CONTACT

- +34 915 504 700
- museodeltraje@mecd.es
- difusion.mt@mecd.es



Museo Nacional de Antropología

The Museum for people like us

Some 140 years old, the Museo Nacional de Antropología is located in a landmark building in a busy area of Madrid - beside Atocha station. The Museum is devoted to every dimension of the human being, including our social diversity and cultural richness and in every corner of the globe. Values such as tolerance, cultural pluralism, respect for differences and identities, and living together in a globalised world are taught through the permanent and temporary exhibitions and a varied activity programme for all ages. The collections allow visitors to become acquainted with different communities spread over five continents. However, the Museum also invites visitors to learn about and reflect on the main challenges facing humanity, especially through the temporary exhibitions. In short, it seeks to create a sense of belonging and become a meeting place for different social groups.

mnantropologia.mcu.es

Facebook



Museo Nacional
de Antropología

OPENING TIMES

- Tuesday to Saturday from 9:30 a.m. to 8:00 p.m.
- Sundays and public holidays from 10:00 a.m. to 3:00 p.m.
- CLOSED: Every Monday · 1 January · 1 May · 24, 25 and 31 December · Two local holidays.

ADMISSION

- GENERAL: 3 €.
- REDUCED: 1,5 €.
- FREE: Saturdays from 2:00 p.m., Sundays and holidays: 18 May · 12 October · 16 November · 6 December.
Reduced and free admission: Ask for further information at the Ticket Office.

ADDRESS

- C/ Alfonso XII, 68
28014 Madrid

GETTING HERE

- BUS: Lines 10, 14, 19, 26, 32, 37, 85, 86 and the "Circular".
- METRO: Atocha Renfe (L1).
- CERCANÍAS RENFE (LOCAL TRAINS): Atocha station.
- BICYCLE: BiciMad docking station 80 at Atocha-Renfe. Public parking cycles at C/ Montalbán.
- PARKING: Daoíz y Velarde car park (Avenida de Barcelona, 2).

CONTACT

- +34 915 306 418 / +34 915 395 995
- antropologico@mecd.es



Museo Nacional de Artes Decorativas

Designing our environment

The aim of the Museum is to interpret the objects that have become part of our everyday life since the 14th century, in addition to the ideas, values and approaches they embody. Our goal is to promote and actively contribute to understanding the context in which these objects were made and used.

The Museum is built around the idea of design in the broadest sense and from a historical perspective, understanding that it is the conscious and planned creation of our environment. Everything is designed and always has been: objects, houses, cities, identity and communication. The Museum's activities seek to analyse and express –through public engagement– our day-to-day life, what we are and what we aspire to be, based on social responsibility.

mnartesdecorativas.mcu.es

Facebook · Twitter · Youtube · Instagram · Pinterest ·
Linkedin · Blog



OPENING TIMES

- Tuesday to Saturday from 9:30 a.m. to 3:00 p.m.
- Thursday from 5:00pm to 8:00 p.m. (except July, August and public holidays).
- Sundays and public holidays from 10:00 a.m. to 3:00 p.m.
- CLOSED: Every Monday · 1 and 6 January · 1 May · 24, 25 and 31 December · One local holiday.

ADMISSION

- GENERAL: 3 €.
- REDUCED: 1,5 €.
- FREE: Saturdays from 2:00 p.m., Sundays and holidays: 18 May · 12 October · 16 November · 6 December.
Reduced and free admission: Ask for further information at the Ticket Office.

ADDRESS

- C/ Montalbán, 12
28014 Madrid

GETTING HERE

- BUS: Lines 1, 2, 5, 9,10, 14, 15, 20, 27, 34, 37, 45, 51, 52, 53, 74, 146 and 150 stop at Plaza de Cibeles; and 1, 2, 9, 15, 19, 20, 28, 51, 52, 74 and 146 stop at Plaza de la Independencia.
- METRO: Banco de España and Retiro (L2).
- TRAIN (RENFE) CERCANÍAS: Recoletos station (C1, C2, C7, C8 and C10).
- BICYCLE: BiciMad docking station 65 in C/Antonio Maura and station 86 in Plaza de la Independencia. Bicycle lane in C/ Serrano.
- PARKING: C/ Montalbán, 1.

CONTACT

- +34 915 326 499
- mnad@mecd.es



Museo Nacional del Romanticismo

A journey through time

The Museo del Romanticismo transports visitors back to a fascinating era. In this mansion in the centre of Madrid, the atmosphere, rooms and lifestyle of the wealthy bourgeoisie of the 19th century have been recreated. Walking through the ballroom, dining room or garden, the visitor will become acquainted with the main protagonists of the Romantic artistic and cultural movement in Spain, which coincided with the reign of Queen Isabella II (1833-1868).

The collections of the Museo del Romanticismo are characterised by their quality and diversity. The collection of paintings, comprising works by Goya, Madrazo, Esquivel and Pérez Villaamil, among others, stands out, but there are also sculptures, miniatures, drawings, prints, photographs, furniture, decorative arts and curious everyday objects; in short, a wide variety of pieces which help recreate the customs and traditions of an entire era.

Seeking to be an active centre open to everyone, the Museum holds cultural activities for all ages, including concerts, workshops for children and young people, storytelling, talks and many other activities.

museoromanticismo.mcu.es

Facebook · Twitter · YouTube · Flickr · Instagram · Spotify



Museo del
Romanticismo

OPENING TIMES

- MAY TO OCTOBER:
Tuesday to Saturday from 9:30 a.m. to 8:30 p.m., Sundays and public holidays from 10:00 a.m. to 3:00 p.m.
- NOVEMBER TO ABRIL:
Tuesday to Saturday from 9:30 a.m. to 6:30 p.m., Sundays and public holidays from 10:00 a.m. to 3:00 p.m.
- CLOSED: Every Monday · 1 and 6 January · 1 May · 24, 25 and 31 December · One local holiday.

ADMISSION

- GENERAL: 3 €
- REDUCED: 1,5 €.
- FREE: Saturdays from 2:00 p.m., Sundays and holidays: 18 May · 12 October · 16 November · 6 December.
Reduced and free admission: Ask for further information at the Ticket Office.

ADDRESS

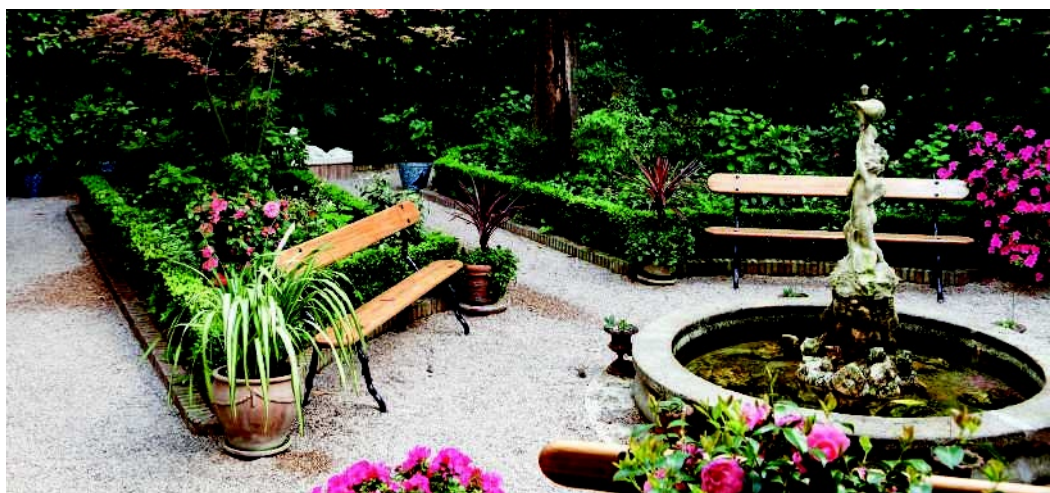
- C/ San Mateo, 13
28004 Madrid

GETTING HERE

- BUS: Lines 3, 37 and 40.
- METRO: Alonso Martínez (L4, L5 and L10) and Tribunal (L1 and L10).
- CERCANÍAS RENFE (LOCAL TRAINS):
Recoletos station (C1, C2, C7, C8 and C10).
- BICYCLE: BiciMad docking station 7 in C/ Hortaleza.
- PARKING: Arquitecto Ribera (C/Barceló) and Fuencarral car parks.

CONTACT

- +34 914 481 045 / +34 914 480 163
- informacion.romanticismo@mecd.es



Museo Sorolla

The Mediterranean light in Madrid

The Museo Sorolla occupies the building that was the home and studio of the artist Joaquín Sorolla y Bastida (Valencia, 1863 - Cercedilla, 1923). It is one of the best preserved artist's homes in the whole of Europe and houses many of his masterpieces: splendid paintings full of colour that powerfully evoke the *joie de vivre* and intense light of the Mediterranean. The original decoration of the home has been preserved almost intact, with the furniture and decorations that Sorolla chose himself and which were part of his everyday life. And the garden, designed by Sorolla, is a beautiful oasis in the centre of the city. The two form a unique space that provides an insight into the Valencian painter's creative intimacy and the essence of the era in which he lived.

museosorolla.mcu.es

Facebook · Twitter · beQbe

MUSEO  SOROLLA

OPENING TIMES

- Tuesday to Saturday from 9:30 a.m. to 8:00 p.m.
- Sundays and public holidays from 10:00 a.m. to 3:00 p.m.
- CLOSED: Every Monday · 1 and 6 January · 1 May · 24, 25 and 31 December · One local holiday.

ADMISSION

- GENERAL: 3 €.
- REDUCED: 1,5 €.
- FREE: Saturdays from 2:00 p.m., Sundays and holidays: 18 May · 12 October · 16 November · 6 December.
Reduced and free admission: Ask for further information at the Ticket Office.

ADDRESS

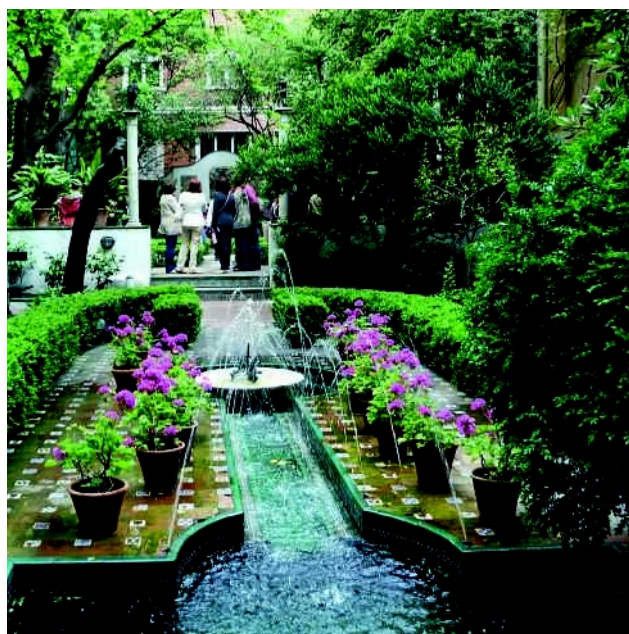
- Paseo del General Martínez Campos, 37
28010 Madrid

GETTING HERE

- BUS: Lines 5, 7, 14, 16, 27, 40, 45, 61, 147 and 150.
- METRO: Iglesia (L1), Rubén Darío (L5) and Gregorio Marañón (L7 and L10).
- PARKING: C/ Zurbano, 68 and Paseo del General Martínez Campos, 42.

CONTACT

- +34 913 101 584
- museo.sorolla@mecd.es



Museo Nacional de Arte Romano

A Roman city on the edge of the Empire

The Museum offers a glimpse into life in one of the largest Roman colonies in Hispania, Emerita Augusta, which was one of the most important cities in Lusitania and eventually became the capital of Hispania.

The Museum houses the artefacts found in the archaeological site of Mérida, which has been declared a World Heritage Site by UNESCO. The building housing the Museo Nacional de Arte Romano was designed by Rafael Moneo and is a benchmark in contemporary museum architecture. Iconic pieces such as mosaics, sculptures, plaques and documents on the Roman culture provide an insight into everyday life in the colony of Emerita Augusta, which was founded by Augustus after one of the episodes of the Cantabrian Wars, and is one of the greatest examples of the romanisation of Hispania.

museoarteromano.mcu.es

Facebook · Twitter



OPENING TIMES

- APRIL TO SEPTEMBER:
Tuesday to Saturday from 9:30 a.m. to 8:00 p.m. Sundays and public holidays from 10:00 a.m. to 3:00 p.m.
- OCTOBER TO MARCH:
Tuesday to Saturday from 9:30 a.m. to 6:30 p.m. Sundays and public holidays from 10:00 a.m. to 3:00 p.m.
- CLOSED: Every Monday · 1 and 6 January · 1 May · 24, 25 and 31 December · One local holiday.

ADMISSION

- GENERAL: 3 €.
- REDUCED: 1,5 €.
- FREE: Saturdays from 2:00 p.m., Sundays and holidays: 18 May · 12 October · 16 November · 6 December.
Reduced and free admission: Ask for further information at the Ticket Office.

ADDRESS

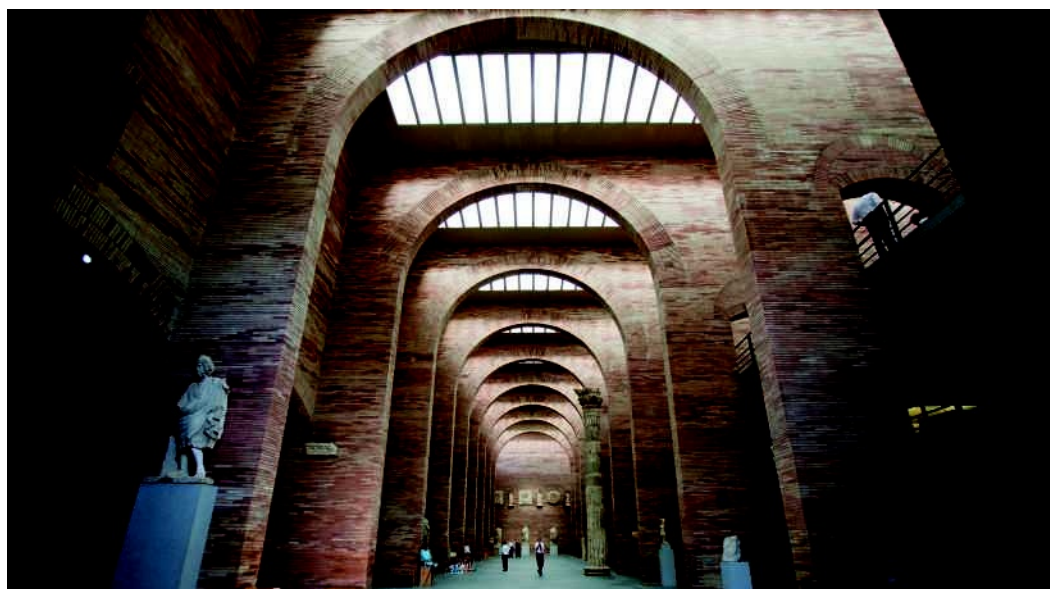
- C/ José Ramón Mélida, s/n
06800 Mérida (Badajoz)

GETTING HERE

- BUS: Line 2.
- PARKING: Hernán Cortés car park.

CONTACT

- +34 924 311 690
- mnar@mecd.es



Museo Nacional y Centro de Investigación de Altamira

Altamira: the beauty of prehistory

This is a Museum where you will learn about Altamira, the greatest masterpiece of ancient art, as well as our ancestors, their day-to-day life and culture.

The Museum offers visitors the opportunity to understand, enjoy and experience the life of those who painted and lived in Altamira Cave. The exhibition “Los tiempos de Altamira” shows the hunter-gatherers at their daily tasks; films, backdrops and cartoons explain how the artefacts preserved and displayed were used. Within the exhibition, the Neo-cave shows what Altamira was like at the beginning of the history of humanity, both as a settlement and as a sacred site.

Visitors can also experience the Palaeolithic technologies through Prehistory and Art workshops and imagine what the area around Altamira Cave was like during the Palaeolithic period seen through today's landscape.

museodealtamira.mcu.es

Facebook · Twitter · Youtube · beQbe · Foursquare · Yelp



MUSEO DE ALTAMIRA

OPENING TIMES

- MAY TO OCTOBER: Tuesday to Saturday from 9:30 a.m. to 8:00 p.m. Sundays and public holidays from 9:30 a.m. to 3:00 p.m.
- NOVEMBER TO APRIL: Tuesday to Saturday from 9:30 a.m. to 6:00 p.m. Sundays and public holidays from 9:30 a.m. to 3:00 p.m.
- CLOSED: Every Monday · 1 January · 1 May · 24, 25 and 31 December · Two local holidays.

ADMISSION

- GENERAL: 3 €.
 - REDUCED: 1,5 €.
 - FREE: Saturdays from 2:00 p.m., Sundays and holidays: 18 May · 12 October · 16 November · 6 December.
- Reduced and free admission: Ask for further information at the Ticket Office.

ADDRESS

- Avenida Marcelino Sanz de Sautuola, s/n
39330 Santillana del Mar (Cantabria)

GETTING HERE

- SANTANDER AIRPORT: 25 km from the Museum.
- TRAIN (RENFE): Torrelavega station, 6 km from the Museum.
- TRAIN (FEVE): Puente de San Miguel station, 4 Km from the Museum.
- ROAD: From Castilla y León, motorway A-67; from Asturias and the Basque Country, motorway A-8 (exit 234 to Santillana del Mar). At Puente San Miguel and Santillana del Mar, follow the sign for Museo de Altamira.

CONTACT

- +34 942 818 005 / +34 942 818 815
- informacion.maltamira@mecd.es



Museo del Greco

Modern El Greco

The new Museo del Greco in Toledo houses the “more modern” works of one of the great masters of painting, and boasts a new layout and communicative exhibition devoted to his later works, which were produced during his stay in Spain.

After his arrival in Toledo, Spanish patrons of the arts and clientele had a decisive influence on the development of his style. Museo del Greco offers the opportunity to see the artist’s most famous paintings from this period, such as the *Apostolate*, the *Altarpiece of Saint Bernardine* and the *View and map of the town of Toledo*. It also houses works by some of El Greco’s followers, like the artist Luis Tristán.

There is an exhibition space devoted to the Museum’s founder, the Marquis of Vega-Inclán, which highlights the role of this collector in the promotion of Spanish art as a tourist attraction and the revival of El Greco. There are different exhibition spaces designed by the Marquis, such as an example of the Romantic interpretation of the painter made in the early 20th century.

museodelgreco.mcu.es

Facebook · Twitter · Flickr · Pinterest

MUSEO DEL
GRECO

OPENING TIMES

- MARCH TO OCTOBER: Tuesday to Saturday from 9:30 a.m. to 7:30 p.m., Sundays and public holidays from 10:00 a.m. to 3:00 p.m.
- NOVEMBER TO FEBRUARY: Tuesday to Saturday from 9:30 a.m. to 6:00 p.m., Sundays and public holidays from 10:00 a.m. to 3:00 p.m.
- CLOSED: Every Monday · 1 and 6 January · 1 May · 24, 25 and 31 December · One local holiday.

ADMISSION

- GENERAL: 3 €.
- REDUCED: 1,5 €.
- FREE: Saturdays from 2:00 p.m., Sundays and holidays: 18 May · 12 October · 16 November · 6 December.
Reduced and free admission: Ask for further information at the Ticket Office.

ADDRESS

- Paseo del Tránsito, s/n
45002 Toledo

GETTING HERE

- BUS: Lines 5 (Zocodover; from the bus and train stations), 6.1 and 6.2 (from the train station) and 12 (“Circular” in the old city).
- PARKING: Santo Tomás public car park (C/ Santa Úrsula, 8), Recaredo car park (Paseo Recaredo, 22), Miradero public car park (C/ Gerardo Lobo, s/n) and Corralillo public car park (Cuesta de los Capuchinos, s/n).

CONTACT

- +34 925 990 980
- museodelgreco@mecd.es



Museo Sefardí

Sepharad: the story of a living culture

The Museo Sefardí preserves the legacy of the Spanish Jewish and Sephardic culture, which was an essential part of the heritage of Toledo, whose old city has been declared a World Heritage Site. The Museo Sefardí is located in an iconic building in Toledo's Jewish quarters -the Synagogue of El Tránsito- founded by Samuel ha-Leví in the mid-14th century with the permission of Peter I of Castile. Since then, historic changes have made this a living building in which each culture and generation has left its mark; from a synagogue it became a Christian temple, asylum, hospital, private home, chapel, army barracks, national monument and, finally, a museum. Its brick walls and wooden roof provided shelter for Jewish craftsmen, Muslim masons and Christian artisans, which perfectly sums up the cultural melting pot that was the town of Toledo. A walk through the Museum's exhibition halls reveals the secrets of our least known heritage.

museosefardi.mcu.es

Facebook · Twitter · YouTube · Flickr · Pinterest · Vimeo



OPENING TIMES

- NOVEMBER TO FEBRUARY:
Tuesday to Saturday from 9:30 a.m. to 6:00 p.m. Sundays and public holidays from 10:00 a.m. to 3:00 p.m.
- MARCH TO OCTOBER:
Tuesday to Saturday from 9:30 a.m. to 7:30 p.m. Sundays and public holidays from 10:00 a.m. to 3:00 p.m.
- CLOSED: Every Monday · 1 and 6 January · 1 May · 24, 25 and 31 December · One local holiday.

ADMISSION

- GENERAL: 3 €.
- REDUCED: 1,5 €.
- FREE: Saturdays from 2:00 p.m., Sundays and holidays: 18 May · 12 October · 16 November · 6 December.
Reduced and free admission: Ask for further information at the Ticket Office.

ADDRESS

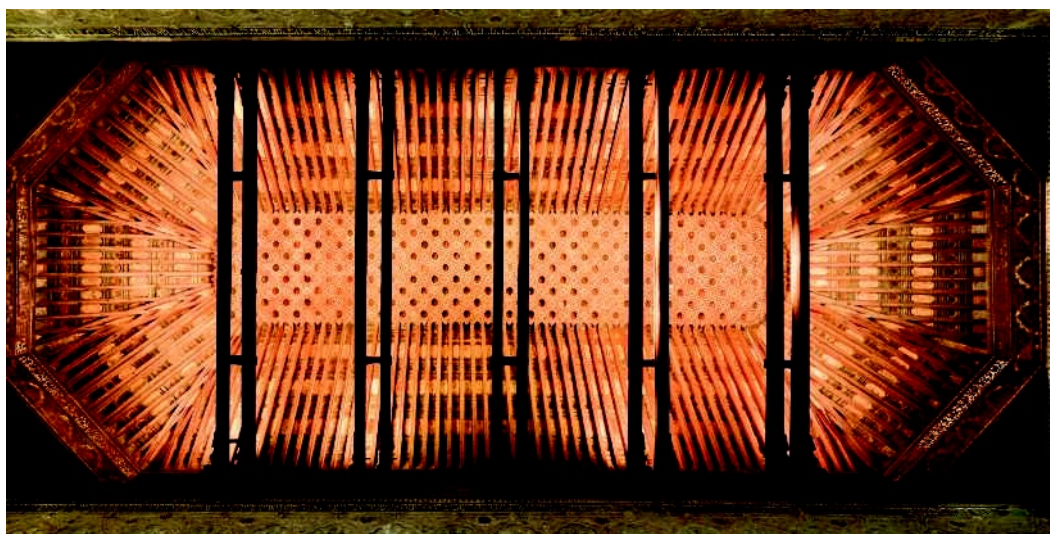
- C/ Samuel Leví, s/n
45002 Toledo

GETTING HERE

- BUS: Lines 5 (Zocodover, from the bus and train stations), 6.1 and 6.2 (from the train station), 11 and 12 ('Circular' in the old city).
- PARKING: Santo Tomé public car park (C/ Santa Úrsula, 8), Recaredo car park (Paseo Recaredo, 22), Miradero public car park (C/ Gerardo Lobo, s/n) and Corralillo public car park (Cuesta de los Capuchinos, s/n).

CONTACT

- +34 925 223 665
- museo.msefardi@mecc.es



Museo Nacional de Cerámica y de las Artes Suntuarias “González Martí”

The gateway to Valencia

Located in the Palace of the Marquis of Dos Aguas, the Museo Nacional de Cerámica y de las Artes Suntuarias “González Martí” is the result of the passion for the art and collection of ceramics of its founder, after whom it is named.

Accessed through the alabaster door of the palace of the Marquis of Dos Aguas, a true gem of Valencian baroque, the undisputed symbol of the city and the work of Ignacio Vergara and Hipólito Rovira, the ground floor houses sumptuous palatial halls, some with the original furniture, as well as two carriages and a Neapolitan crèche, all from the 18th century. The first floor houses a collection of paintings by Ignacio Pinazo, precious metal objects, furniture, jewellery, tapestries, etc. The second and third floors are devoted to ceramics, displayed chronologically and dating from prehistoric times to the present day, and boast magnificent pieces that highlight the ceramic-making tradition in the Valencian regions of Paterna, Manises and Alcora.

mnceramica.mcu.es

Facebook · Twitter



MUSEO NACIONAL
DE CERÁMICA
Y ARTES SuntuARIAS
GONZÁLEZ MARTÍ

OPENING TIMES

- Tuesday to Saturday from 10:00 a.m. to 2:00 p.m. and from 4:00 p.m. to 8:00 p.m.
- Sundays and holidays from 10:00 a.m. to 2:00 p.m.
- CLOSED: Every Monday · 1 and 6 January · 1 May · 24, 25 and 31 December · One local holiday.

ADMISSION

- GENERAL: 3 €.
 - REDUCED: 1,5 €.
 - FREE: Saturdays from 2:00 p.m., Sundays and holidays: 18 May · 12 October · 16 November · 6 December.
- Reduced and free admission: Ask for further information at the Ticket Office.

ADDRESS

- C/ Poeta Querol, 2
46002 Valencia

GETTING HERE

- BUS: Lines 31, 70, 6, 8, 9, 10, 11, 27, 70, 71 and buses going to Plaza del Ayuntamiento.
- METRO: Colón (L3 and L5).
- BICYCLE: Valenbisi docking stations in C/Poeta Querol, Plaza del Ayuntamiento, Plaza de la Reina and C/ Barcas.
- PARKING: Plaza de la Reina car park, El Corte Inglés car park (C/Pintor Sorolla and C/ Colón) and Plaza Porta del Mar car park.

CONTACT

- +34 963 516 392
- informacion.mceramica@meccd.es



Museo Casa de Cervantes

Cervantes: a house of letters

The Museum is located in the building that Miguel de Cervantes stayed in while living in Valladolid. It was at this time that the first edition of Don Quixote was published (1605), and it is therefore believed that he may have written the prologue and preliminary verses here, as well as some of the Exemplary Novels, which refer to the city of Valladolid.

In 1912, King Alfonso XIII purchased the writer's house at the request of the Marquis of Vega-Inclán; Mr Archer Huntington bought the two adjacent houses, and the Biblioteca Popular y Cervantina opened in 1916. In 1948, after the foundations of the Marquis of Vega-Inclán were bequeathed to the state, the museum devoted to Cervantes was opened.

The original structure and interior layout of the house has been kept practically intact since it was built in 1601. It has been decorated according to visual and literary descriptions from the period, and family documents allowed us to trace the furniture, objects and utensils owned by the writer.

OPENING TIMES

- Tuesday to Saturday from 9:30 a.m. to 3:00 p.m.
- Sundays and public holidays from 10:00 a.m. to 3:00 p.m.
- CLOSED: Every Monday · 1 and 6 January · 1 May · 24, 25 and 31 December · One local holiday.

ADMISSION

- GENERAL: 3 €.
 - REDUCED: 1,5 €.
 - FREE: Saturdays from 2:00 p.m., Sundays and holidays: 18 May · 12 October · 16 November · 6 December.
- Reduced and free admission: Ask for further information at the Ticket Office.

ADDRESS

- C/ del Rastro, s/n
47001 Valladolid

GETTING HERE

- BUS: auvasa.es
- PARKING: Plaza España and Plaza Zorrilla.

CONTACT

- +34 983 308 810
- informacion.mcervantes@meccd.es

museocasacervantes.mcu.es

Facebook · Twitter





Museo Nacional de Escultura

A Museum for Spanish sculpture

Because of the dramatic intensity of the works, the serene beauty of the building and its modern presentation, this is undisputedly one of the most unique museums in the world.

The religious sculptures by great Spanish Renaissance and Baroque artists, such as Juan de Juni, Alonso Berruguete and Gregorio Fernández, are some of the most outstanding in Spanish art history and the highlights of the Museum's collections. This type of sculpture displayed a creativity with an unprecedented imaginative force in the 16th and 17th centuries. The combination of art, religion and power offers visitors a number of ways of interpreting, learning about and enjoying the works. In addition, since December 2011, the Museum also houses the collections of the former Museo Nacional de Reproducciones Artísticas.

The main building of the Museum is the Colegio de San Gregorio, a magnificent 15th-century building devoted to the training of theologians, mystics and inquisitors, with the nearby Palacio de Villena and Casa del Sol buildings housing part of the collection.

museoescultura.mcu.es

Facebook · Twitter · Youtube · Flickr · Instagram · Storify



OPENING TIMES

- Tuesday to Saturday from 10:00 a.m. to 2:00 p.m. and from 4:00 p.m. to 7:30 p.m.
- Sundays and public holidays from 10:00 a.m. to 2:00 p.m.
- CLOSED: Every Monday · 1 and 6 January · 1 May · 24, 25 and 31 December · One local holiday.

ADMISSION

- GENERAL: 3 €.
 - REDUCED: 1,5 €.
 - FREE: Saturdays from 2:00 p.m. Sundays and holidays: 18 May · 12 October · 16 November · 6 December.
- Reduced and free admission: Ask for further information at the Ticket Office.

ADDRESS

- C/ Cadenas de San Gregorio, 1, 2 y 3
47011 Valladolid

GETTING HERE

- BUS: Lines 1 and 2 (from the bus and train stations).
- PARKING: Plaza de Portugalete (beside the Cathedral) and Plaza Mayor car parks.

CONTACT

- +34 983 250 375
- museoescultura@meccd.es



Nuestros Museos



Cards

1/ ANNUAL CARD · 25 €

Valid to visit one museums.

2/ ANNUAL CARD FOR STATE MUSEUMS · 36,06 €

Valid to visit the following museums for one year from the date of purchase as often as you like:

ALMAGRO (CIUDAD REAL):

- Museo Nacional del Teatro

CARTAGENA (MURCIA):

- Museo Nacional de Arqueología Subacuática.
ARQUA

MADRID:

- Museo Arqueológico Nacional
- Museo Cerralbo
- Museo de América
- Museo del Traje. CIPE
- Museo Nacional Centro de Arte Reina Sofía
- Museo Nacional de Antropología
- Museo Nacional de Artes Decorativas
- Museo Nacional del Prado
- Museo Nacional del Romanticismo
- Museo Sorolla

MÉRIDA (BADAJOZ):

- Museo Nacional de Arte Romano

SANTILLANA DEL MAR (CANTABRIA)

- Museo Nacional y Centro de Investigación de Altamira

TOLEDO:

- Museo del Greco
- Museo Sefardí

VALENCIA:

- Museo Nacional de Cerámica y de las Artes Suntuarias "González Martí"

VALLADOLID:

- Museo Casa de Cervantes
 - Museo Nacional de Escultura
-

Holders must show these cards together with their identity card or identifying document.



Passes

1/ MADRID PASSES:

Ocho Museos de Madrid • 16 €

Valid for 15 days, entitles admission to the following museums as often as you like.

Cuatro Museos de Madrid • 8 €

Valid for 10 days, entitles admission to 4 of the following museums as often as you like.

- Museo Arqueológico Nacional
- Museo Cerralbo
- Museo de América
- Museo del Traje. CIPE
- Museo Nacional de Antropología
- Museo Nacional de Artes Decorativas
- Museo Nacional del Romanticismo
- Museo Sorolla

2/ TOLEDO PASS:

Museos de Toledo • 5 €

Valid for 3 days, entitles admission to the following museums as often as you like.

- Museo del Greco
- Museo Sefardí

3/ VALLADOLID PASS:

Museos de Valladolid • 5 €

Valid for 3 days, entitles admission to the following museums as often as you like.

- Museo Casa de Cervantes
- Museo Nacional de Escultura

Get more information about Madrid Card in: madridcard.com
and Valladolid Card in: info.valladolid.es/turismo/servicios/valladolid-card



CARTAGENA (MURCIA)

- 1 Museo Nacional de Arqueología Subacuática. ARQUA



MADRID

- 2 Museo Arqueológico Nacional
- 3 Museo Cerralbo
- 4 Museo de América
- 5 Museo del Traje. CIPE
- 6 Museo Nacional de Antropología
- 7 Museo Nacional de Artes Decorativas
- 8 Museo Nacional del Romanticismo
- 9 Museo Sorolla



MÉRIDA (BADAJOZ)

- 10 Museo Nacional de Arte Romano



SANTILLANA DEL MAR (CANTABRIA)

- 11 Museo Nacional y Centro de Investigación de Altamira



TOLEDO

- 12 Museo del Greco
- 13 Museo Sefardí



VALENCIA

- 14 Museo Nacional de Cerámica y de las Artes Suntuarias "González Martí"



VALLADOLID

- 15 Museo Casa de Cervantes
- 16 Museo Nacional de Escultura



GOBIERNO
DE ESPAÑA

MINISTERIO
DE EDUCACIÓN, CULTURA
Y DEPORTE